

# Get to know your Alexa Voice Remote



## Insert included AAA batteries

Remove the battery door and insert the batteries into our Alexa Voice Remote.

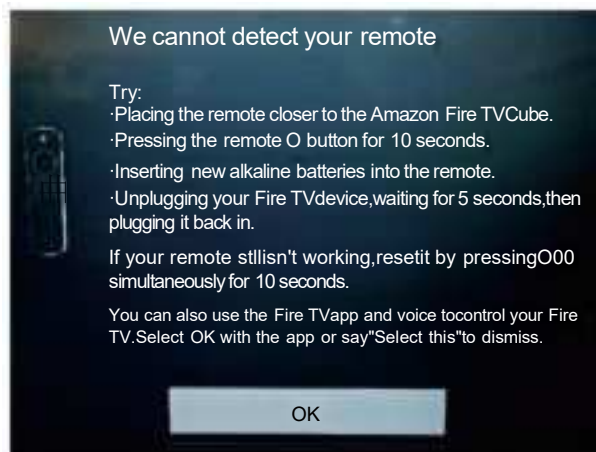
## Pair the remote with your Fire TV device

You must pair your new remote to your Fire TV device.  
Choose the option below that fits your situation.

### A. How to pair with Amazon Fire device

If there are no Insignia TV voice remote or Amazon 3rd generation voice remote currently controlling the Amazon Fire device

1. Disconnect the power to the Amazon Fire device, then reconnect it after 10 seconds.
2. After reconnecting the power, do not operate the box with any device or press any buttons on the remote control.
3. Wait for approximately 1 minute. The television will display the following interface. Press the OK button in the center of the remote control to complete the pairing.



Start using the voice control feature. If unable to use, it indicates unsuccessful pairing. Please repeat the above steps.

### B. If you already have one remote control and need to add another remote control, follow these steps

Use your remote for the following step:

1. Press the Home button, navigate to Setting at the top of the screen, then select  
SETTING > CONTROLLERS & BLUETOOTH DEVICES  
> Voice Remotes with Alexa > Add New Remote
2. Begin using the voice control feature. If unable to use, it indicates unsuccessful pairing. Please repeat the above steps.

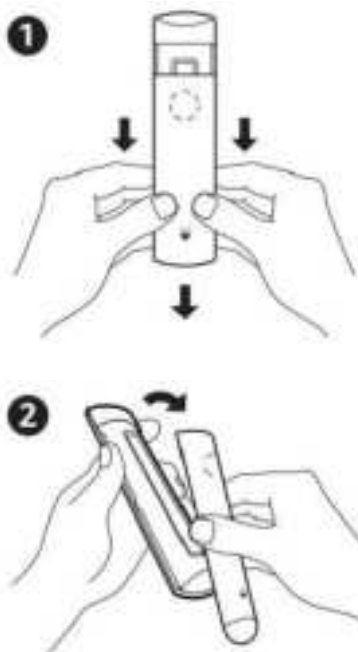
### C. If the VOLUME +/-, MUTE, and Power buttons do not work after pairing, please follow these steps:

Press the HOME button first, then navigate to

SETTINGS > Equipment control > Manage Equipment > TV > Change TV.  
Follow the prompts on the TV screen to learn the functions. Once learning is complete, the mentioned keys should work.  
If they still do not work, repeat the above steps.

### D. If the remote control needs to be re-paired with another Amazon Fire TV or Fire device, it needs to be reset to factory settings:

Simultaneously press and hold the Left, Menu and Back buttons for 20 seconds, then release. Press any button on the remote control; the green light should illuminate, indicating successful factory reset. If the green light does not illuminate or the color is incorrect, please repeat the above steps.



This device complies with part 15 of the FCC Rules. Operation is subject to the following two conditions: (1) this device may not cause harmful interference, and (2) this device must accept any interference received, including interference that may cause undesired operation.

Any changes or modifications not expressly approved by the party responsible for compliance could void the user's authority to operate the equipment.

NOTE: This equipment has been tested and found to comply with the limits for a Class B digital device, pursuant to Part 15 of the FCC Rules. These limits are designed to provide reasonable protection against harmful interference in a residential installation. This equipment generates, uses and can radiate radio frequency energy and, if not installed and used in accordance with the instructions, may cause harmful interference to radio communications. However, there is no guarantee that interference will not occur in a particular installation.

If this equipment does cause harmful interference to radio or television reception, which can be determined by turning the equipment off and on, the user is encouraged to try to correct the interference by one or more of the following measures:

- Reorient or relocate the receiving antenna.
- Increase the separation between the equipment and receiver.
- Connect the equipment into an outlet on a circuit different from that to which the receiver is connected.
- Consult the dealer or an experienced radio/TV technician for help.

The device has been evaluated to meet general RF exposure requirement. The device can be used in portable exposure condition without restriction.