

KitchenAid

STAND BLENDERS

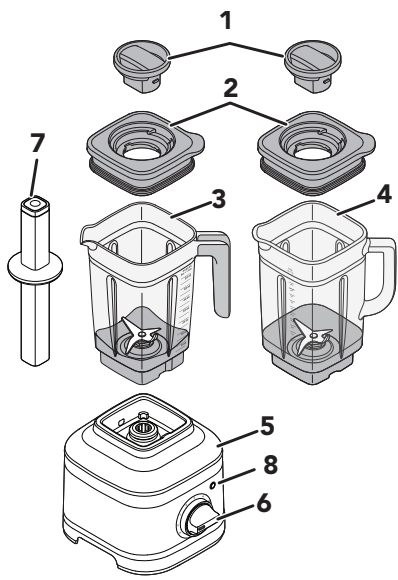
5KSB4028A, 5KSB4026A

PRODUCT GUIDE



W11727755A

PARTS AND FEATURES



- | | |
|--------------------------------------|--|
| 1. Lid Centre Cap | 5. Base |
| 2. Lid with Vent Well | 6. Control Dial |
| 3. Jar (56 oz/1.6 L capacity) | 7. Tamper* |
| 4. Glass Jar* (48 oz/1.4 L capacity) | 8. Start/Stop button (▶ ⊗) with LED ring |

*Accessories only included with certain models.

PRODUCT SAFETY

Your safety and the safety of others are very important.

We have provided many important safety messages in this manual and on your appliance. Always read and obey all safety messages.



This is the safety alert symbol.

This symbol alerts you to potential hazards that can kill or hurt you and others.

All safety messages will follow the safety alert symbol and either the word "DANGER" or "WARNING." These words mean:

⚠ DANGER

You can be killed or seriously injured if you don't immediately follow instructions.

⚠ WARNING

You can be killed or seriously injured if you don't follow instructions.

All safety messages will tell you what the potential hazard is, tell you how to reduce the chance of injury, and tell you what can happen if the instructions are not followed.

IMPORTANT SAFEGUARDS

When using electrical appliances, basic safety precautions should always be followed, including the following:

1. Read all instructions. Misuse of appliance may result in personal injury.
2. To protect against risk of electrical shock do not put Stand Blender Base in water or other liquid.
3. This appliance is not intended for use by persons (including children) with reduced physical, sensory, or mental capabilities, or lack of experience and knowledge, unless they are closely supervised and instructed concerning use of the appliance by a person responsible for their safety. Close supervision is necessary when any appliance is used by or near children. Children should be supervised to ensure that they do not play with the appliance.
4. Turn the appliance off(⏻), then unplug from the outlet when not in use, before assembling or disassembling parts and before cleaning. To unplug, grasp the plug and pull from the outlet. Never pull from the power cord.

- 5.** Avoid contacting moving parts.
- 6.** Do not operate any appliance with a damaged cord or plug, or after the appliance malfunctions, or is dropped or damaged in any manner. Return appliance to the nearest Authorised Service Facility for examination, repair, or electrical or mechanical adjustment.
- 7.** Do not use the appliance outdoors.
- 8.** Do not let cord hang over edge of table or counter.
- 9.** Keep hands and utensils, other than the Tamper provided, out of the container while blending to reduce the risk of severe injury to persons or damage to the Blender. The cover must remain in place when using the Tamper through the cover opening. A scraper may be used but must be used only when the Blender is not running.
- 10.** Blades are sharp. Handle thoroughly.
- 11.** Always operate Blender with cover in place.
- 12.** Do not use appliance for other than intended use.
- 13.** When blending hot liquids or ingredients, Lid Center Cap should remain in place over the lid opening. Always start on lowest speed and slowly ramp to desired speed when blending hot liquids or ingredients.
- 14.** The use of accessories/attachments not recommended or sold by KitchenAid may cause fire, electrical shock, or injury to persons.
- 15.** If the supply cord is damaged, it must be replaced by KitchenAid, its service agent or similarly qualified persons in order to avoid a hazard.
- 16.** Allow the appliance to cool completely before putting on or taking off parts, and before cleaning the appliance.
- 17.** Refer to the “Care and Cleaning” section for instructions on cleaning the surfaces in contact with food.

18. This appliance is intended to be used in household and similar applications such as:

- staff kitchen areas in shops, offices and other working environments;
- farmhouses;
- by clients in hotels, motels and other residential type environments;
- bed and breakfast type environments.

SAVE THESE INSTRUCTIONS

For complete details on product information, instructions and videos, including Guarantee information, visit

www.kitchenaid.com.au or **www.KitchenAid.co.nz**.

ELECTRICAL REQUIREMENTS

WARNING

Electrical Shock Hazard



Plug into an earthed outlet.

Do not remove earth prong.

Do not use an adapter.

Do not use an extension cord.

Failure to follow these instructions can result in death, fire, or electrical shock.

Voltage: 220-240 V~

Frequency: 50-60 Hz

NOTE: If the plug does not fit in the outlet, contact a qualified electrician. Do not modify the plug in any way. Do not use an adapter.





Do not use an extension cord. If the power supply cord is too short, have a qualified electrician or service technician to install an outlet near the appliance.

The power rating of your Stand Blender is printed on the serial plate.





The maximum rating is based on the attachment that draws the greatest load (power). Other recommended attachments may draw significantly less power.

GETTING STARTED

BLENDER FUNCTION GUIDE

It features variable speeds (from 1 to 5) and Pulse (P) function to customize blending. Also, pre-programmed recipe settings like, Ice Crush () , Icy Drink () and, Smoothie () are designed to deliver optimal results. Use the self-cleaning cycle () after blending for easy

clean up. We encourage you to experiment to find the best speed for your favorite recipes.

SETTING	DESCRIPTION	BLENDING TIME (MINUTES: SECONDS)	SUGGESTED ITEMS TO BLEND
Pulse (P)	Allows precise control of the duration and frequency of blending.	Manual	Salsa, crumb topping, chopped nuts, fruits or vegetables & more.
Vabriable Speed (1–5)	Manual speeds offer ultimate control of the Blender.	3:00	Fruits, soups, sauces, doughs, vegetables, butters, nuts, dips, frozen desserts, purées.
Ice Crush 	The Blender runs at optimal speed to crush ice.	00:30	To crush and chop ice without adding any liquid ingredients.
Icy Drink 	Gradually ramp up to full power to blend hard foods.	00:30	Ice, whole fruits or vegetables, or frozen fruits. Use for drinks as margaritas, daiquiris, and blended ice coffee drinks.
Smoothie 	The Blender will operate at the high speed to make purées of items or ingredients.	00:45	Fruits, vegetables, ice cream and yoghurt into thick smoothie, blended drinks and milkshakes, etc.
Clean 	Quick pulses of power and high speeds work to clean the Blender Jar.	00:13	Half of the Jar filled with warm water and 1-2 drops of dish soap.

BLENDER ACCESSORY GUIDE

ACCESSORIES	CAPACITY	SPEED	SUGGESTED ITEMS TO BLEND
Blender Jar	56 oz/1.6 L	All speeds, Pulse, and Preset recipes.	Full recipe smoothie, icy drinks, shakes/malts, dips, spreads and more.

PRODUCT USAGE

USING THE BLENDER

First, clean all parts and accessories (see “Care and Cleaning” section). Be sure the countertop beneath the Blender and surrounding areas are dry and clean.

IMPORTANT: When moving your Blender, always support/lift from the Blender Base. Base will become disengaged from jar if carried by Blender jar or Blender jar handle only.

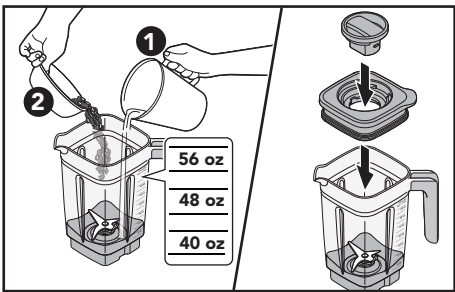
⚠ WARNING

Electrical Shock Hazard

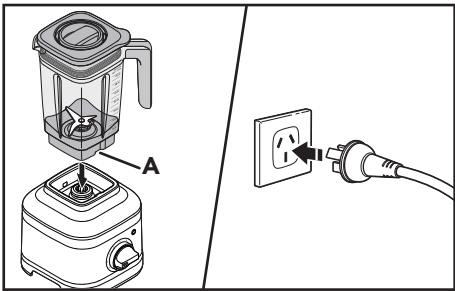


- Plug into an earthed outlet.
- Do not remove earth prong.
- Do not use an adapter.
- Do not use an extension cord.
- Failure to follow these instructions can result in death, fire, or electrical shock.

1. Add ingredients into Jar (maximum 56 oz/1.6 L or maximum 48 oz/1.4 L for Glass Jar). Secure the Lid and Lid Centre Cap.

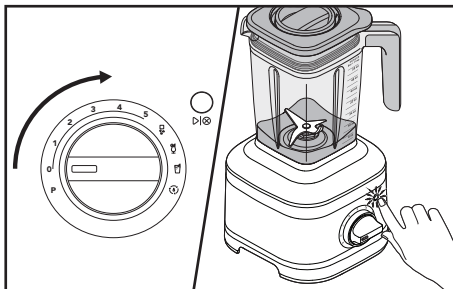


2. Place and align the Jar with the Slot to fit inside the jar pad, facing Jar handle towards Control Dial. Plug the Blender into a earthed outlet.

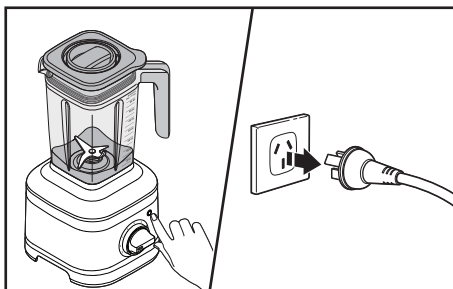


A. Slot

3. Turn Dial from (O) to desired speed or preset recipe program. Press (▶|⊗) to start. See “Blender Function Guide” for more details.

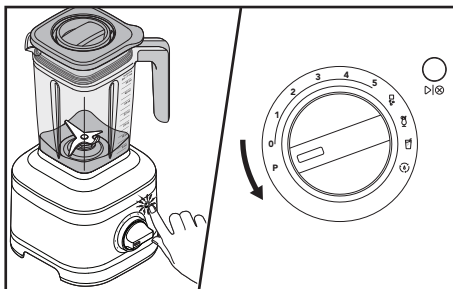


4. When finished, press (▶|⊗) to stop. Unplug before removing the Blender Jar.



NOTE: For variable speeds (from 1 to 5), the Blender will stop automatically after 3 minutes of run time. For preset recipe programs, the Blender will automatically stop blending once the cycle is complete.

5. **Pulse mode:** Press (▶|⊗). Turn and hold the Control Dial from (O) to (P) as per desired interval of time. When finished, release the Control Dial to stop.



6. **Tamper Accessory:** Remove the Lid Centre Cap only. Stir or press contents down towards the blade. Then, place the Lid Centre Cap back before resuming blending.



NOTE: If blending hot liquids and ingredients, start on a low speed and then ramp up to the desired speed. Use variable speed and run for 1-2 minutes.

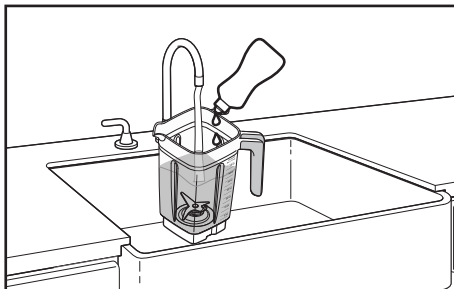
IMPORTANT: Allow the Blender to fully stop before removing the Lid, Blender Jar, or pouring out blended ingredients.

CARE AND CLEANING

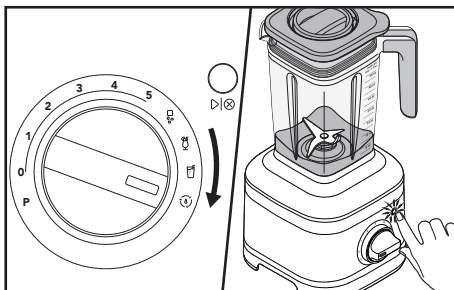
IMPORTANT: Allow the appliance to cool completely before putting on or taking off parts, and before cleaning the appliance.

USING THE CLEAN FUNCTION

1. Fill half of the Jar with warm water and add 1 or 2 drops of dish-washing liquid. Place the Jar on the Base. Secure the Lid and Lid Center Cap.

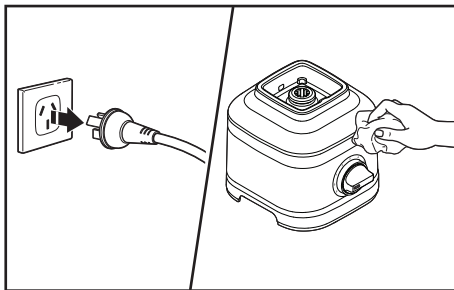


2. Turn from (O) to (P). Press (▶▶) button to start. Remove and empty contents and rinse with warm water and dry thoroughly.

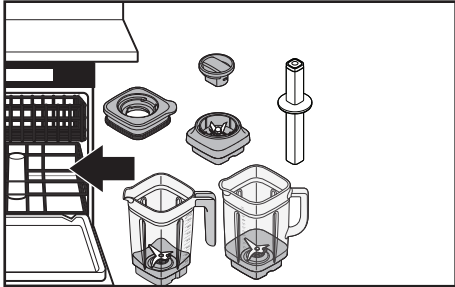


NOTE: Do not immerse the Blender Base or cord in water. Do not use abrasive cleansers or scouring pads to avoid scratching.

3. Unplug before cleaning. Wipe the Base, Power Cord with a warm, damp cloth and dry with a soft cloth.




4. Lids, Tamper, Blender Jar and Glass Jar can also be washed in the bottom rack.



FOR DETAILED INFORMATION ON USING AND CLEANING THE BLENDER

Visit www.kitchenaid.com/quickstart for additional instructions with videos, inspiring recipes, and tips on how to clean your Blender.

TROUBLESHOOTING



⚠ WARNING

Electrical Shock Hazard

Plug into an earthed outlet.
Do not remove earth prong.
Do not use an adapter.
Do not use an extension cord.

Failure to follow these instructions can result in death, fire, or electrical shock.

PROBLEM	SOLUTION
If Blender fails to start	Check to see if the Blender is securely plugged into an earthed electrical outlet.
	If you have a circuit breaker box, make sure the circuit is closed.
If Blender stops after 3 minutes	It's a part of the Blender operation to ensure lasting durability. Turn the Control Dial to (O) and repeat the process until desired consistency.
If Blender stops while blending	When overloaded or jammed, it will automatically shut off to prevent motor damage. Unplug the Blender. Remove the Jar and use a spatula to rearrange ingredients.
	Or, divide contents into smaller batches. For certain recipes, adding liquid in the Jar may also reduce the load.

PROBLEM	SOLUTION
If ingredients are stuck or not blending	Unplug the Blender. Remove the Jar from the Base, and use a spatula to rearrange ingredients in the Jar.
If Blender stops while blending and the white LED ring flashes rapidly	An error is detected in the Blender. Contact an Authorised Service Centre for assistance. See the “Customer Service” section.
If the white LED ring is off	After 10 minutes of no activity the Blender will go into Sleep mode. To wake up the Blender, press (▷ ⊗) button.

If the problem is not due to one of the above items, see the “Customer Service” section. Do not return the Blender to the retailer. Retailers do not provide service.

CUSTOMER SERVICE

In Australia:

For any questions, or to find the nearest Authorised KitchenAid Service Centre, please find our contact details below.

NOTE: All service should be handled locally by an Authorised KitchenAid Service Centre.

Toll free number: 1-800-990-990

Phone number: 02 49026500

Address Australia:

KitchenAid Australia Pty Ltd

6-8 Billbrooke Close

Cameron Park NSW 2285, Australia

Phone: 1-800-990-990

Mobile: 02 49026500

Email: enquiries@KitchenAid.com.au

In New Zealand:

Website: www.KitchenAid.co.nz

Email: enquiries@KitchenAid.co.nz

Phone: 0800 881 200

In other countries:

For all product related questions and after-sales matters, please contact your dealer to obtain the name of the nearest Authorised KitchenAid Service/Customer Centre.

For complete details on product information, instructions and videos, including Guarantee information, visit our website at: www.KitchenAid.com.au.

KitchenAid

©2024 All rights reserved.