



Network Speed Dome

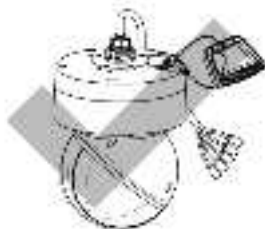
Quick Start Guide

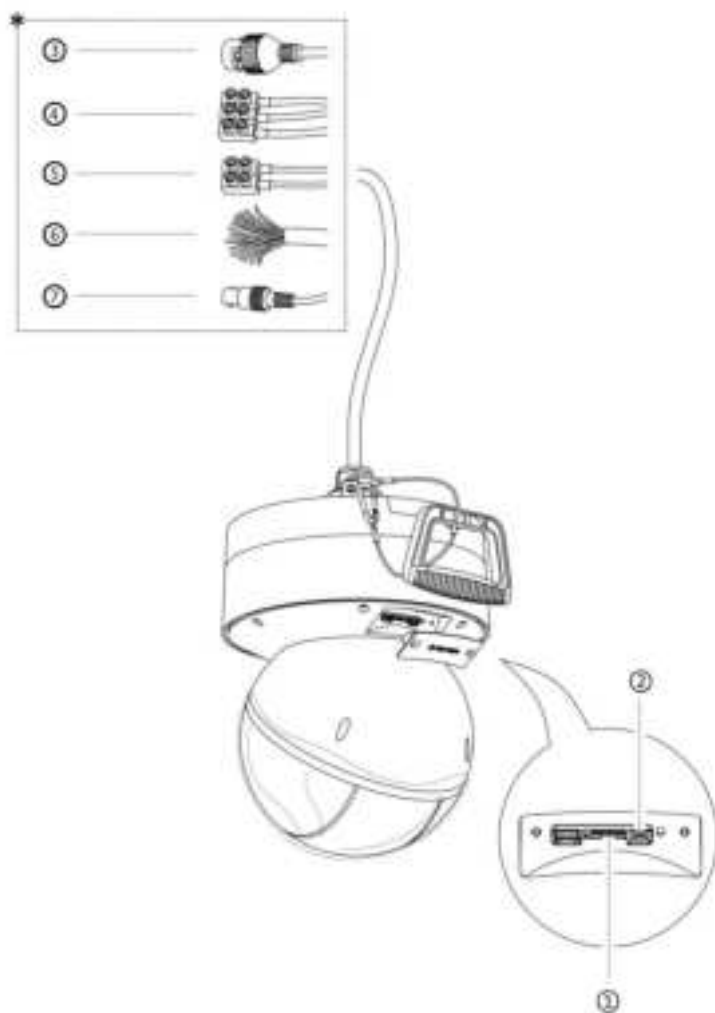
1.

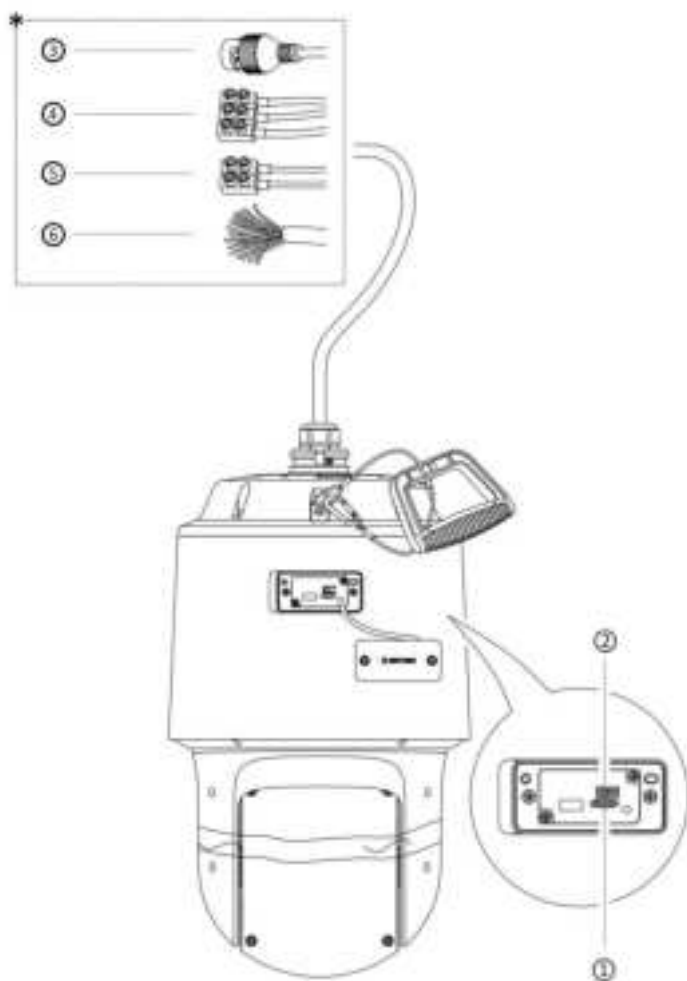


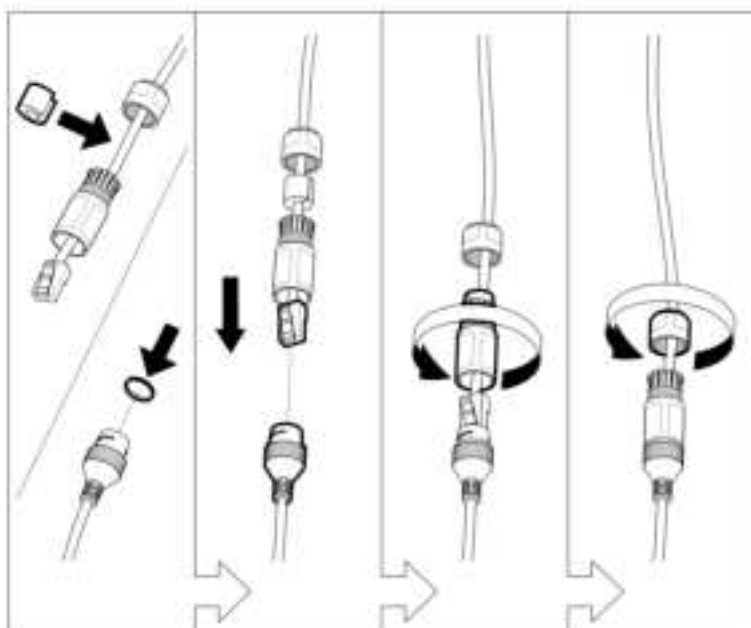
2.

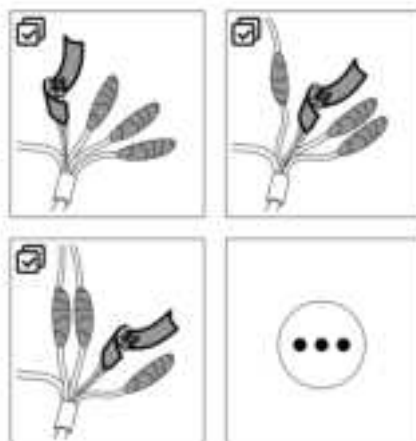
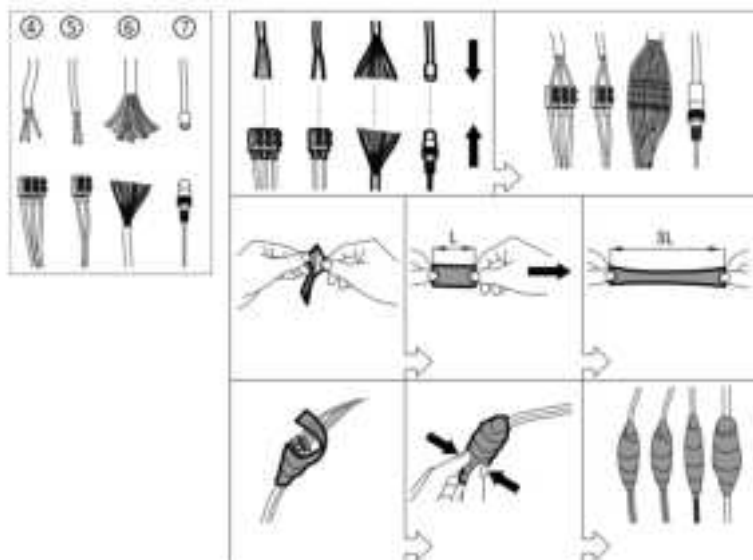






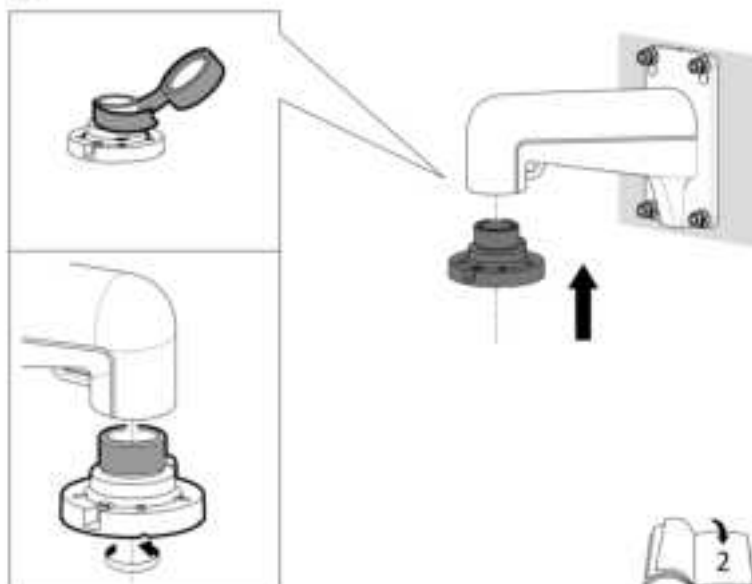




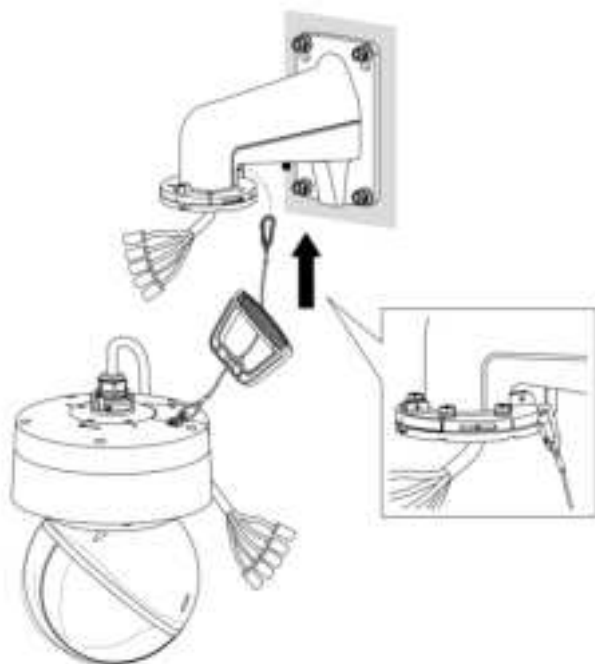




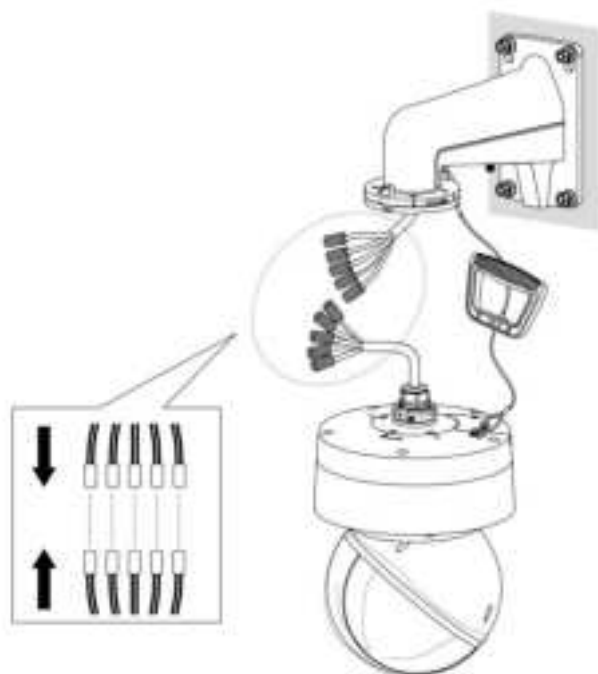
1



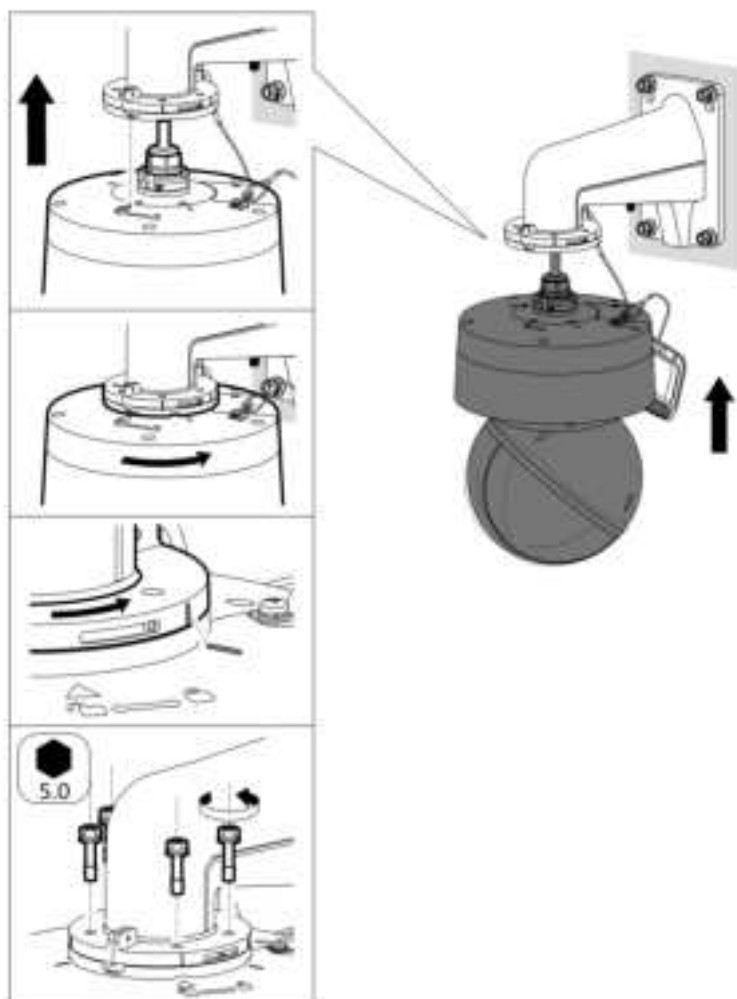
2



3

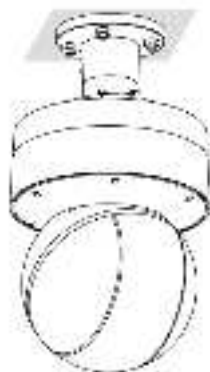


4



5





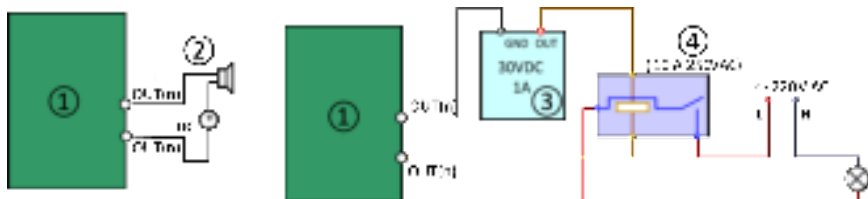
 Read this manual before using the product.

Product appearance is for reference only and may differ from the actual product.

Interface

- ① Memory card slot
- ② Reset button: Press reset button for about 10 s when the camera is powering on or rebooting to restore the default settings, including the user name, password, IP address, port No., etc.
- ③ Network interface
- ④ Power interface
- ⑤ RS-485 interface
- ⑥ Audio interface/Alarm interface
- ⑦ Video interface

Alarm Output



- ① Relay output
- ② DC load
- ③ Power supply
- ④ JQC-3FG Relay



Protective Measures for Outdoor Installation



Activate and Access Network Camera

